



Essay

## Medical Inspired Images

**Birgitta Hosea**

School of Film Media and Performing Arts, UCA Farnham

1. *Human Cell Atlas Commission Brainstorming 01*,  
35x14cm, felt pen, inkpen, July 2020

2. *Human Cell Atlas Commission Brainstorming 02*,  
21x21cm, felt pen, inkpen, July 2020

Images created as part of the brainstorming process to apply for a Human Cell Atlas art/science commission to engage with mapping all the cells in the human body on the theme of 'Performing Normality'

3. *Endoscopy Research Drawing 01*, 4 images over two pages of A4 sketchbook, Conte Pencil, wax crayon, March 2020

4. *Endoscopy Research Drawing 02*, 21x20.5cm from A4 sketchbook, oil pastel, March 2020

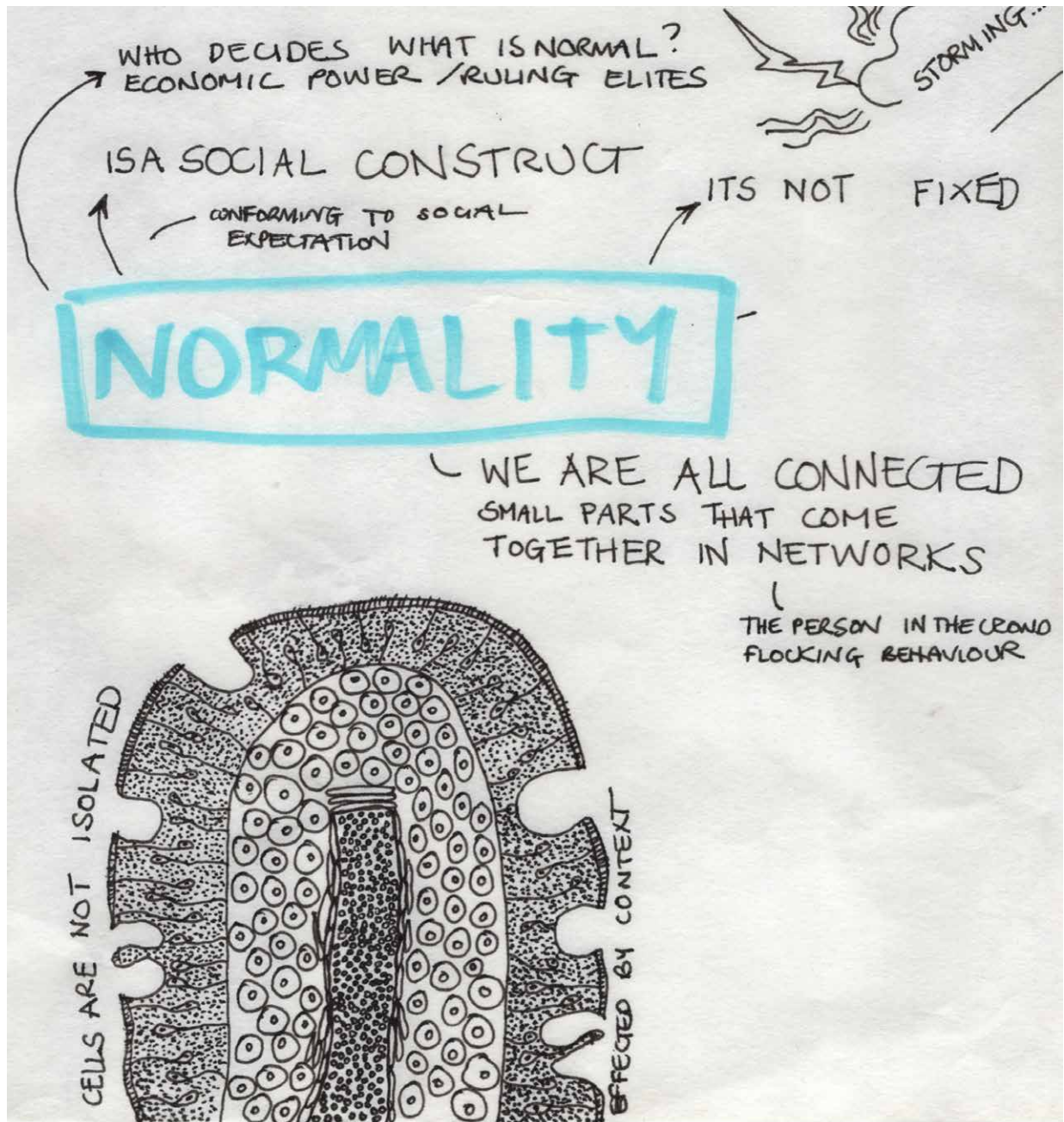
Research drawings for work-in-progress animation for *Holes*, a peepshow installation with animation on show inside

5. *Medical Exquisite Corpse*, A3 sketchbook page, ink, Aug 2020

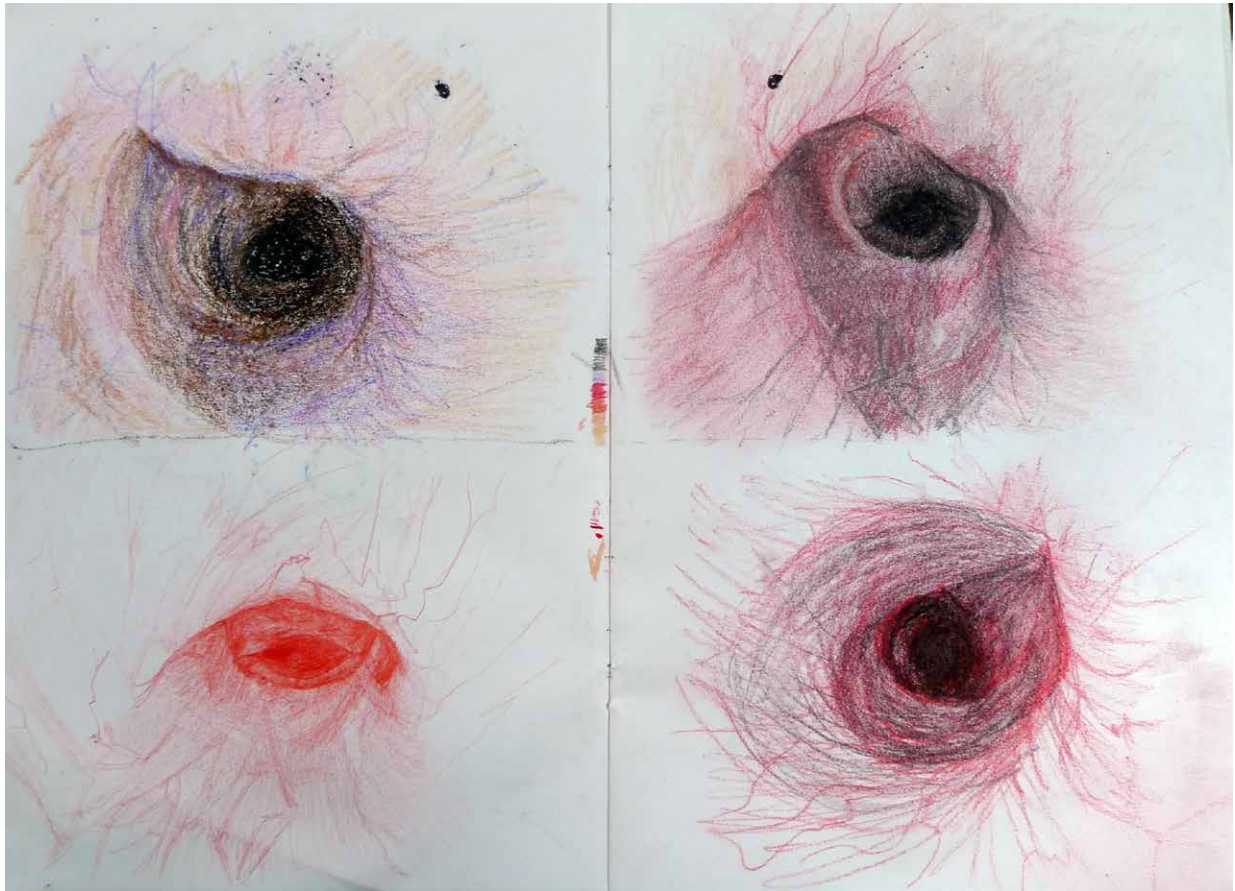
Experimental drawing



*Human Cell Atlas Commission Brainstorming 01*, 35x14cm, felt pen, inkpen, July 2020



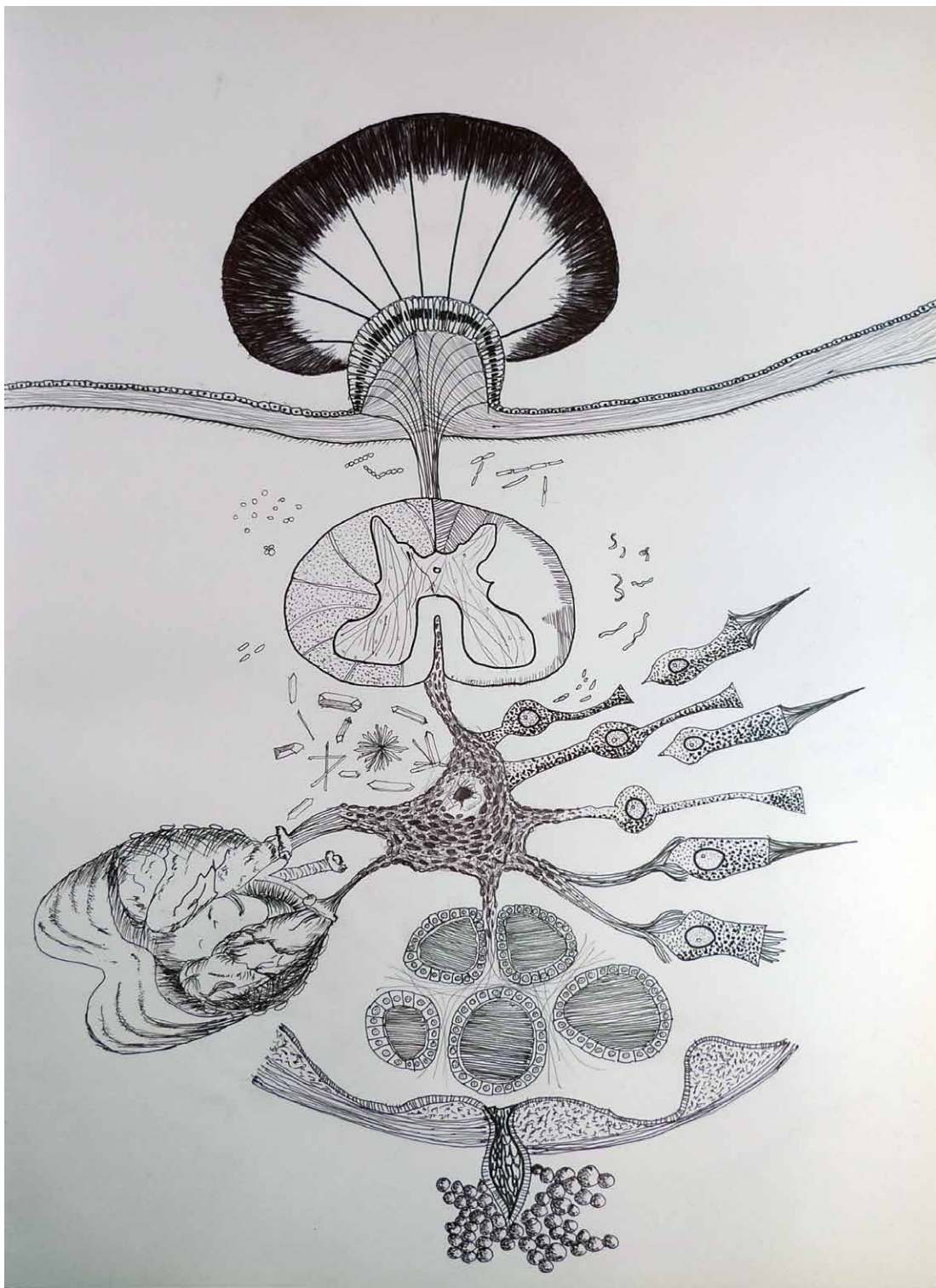
Human Cell Atlas Commission Brainstorming 02, 21x21cm, felt pen, inkpen, July 2020



Endoscopy Research Drawing 01, 4 images over two pages of A4 sketchbook,Conte Pencil, wax crayon, March2020



*Endoscopy Research Drawing 02, 21x20.5cm from A4 sketchbook, oil pastel, March2020*



Medical Exquisite Corpse, A3 sketchbook page, ink, Aug2020